

WEEKLY TEST TYM-02 TEST 13 RAJPUR ROAD
SOLUTION Date 17 -11-2019

[PHYSICS]

1. $t = \frac{A}{a} \sqrt{\frac{2}{g}} [\sqrt{H_1} - \sqrt{H_2}]$

Now, $T_1 = \frac{A}{a} \sqrt{\frac{2}{g}} \left[\sqrt{H} - \sqrt{\frac{H}{\eta}} \right]$

and $T_2 = \frac{A}{a} \sqrt{\frac{2}{g}} \left[\sqrt{\frac{H}{\eta}} - \sqrt{0} \right]$

According to problem $T_1 = T_2$

$$\therefore \sqrt{H} - \sqrt{\frac{H}{\eta}} = \sqrt{\frac{H}{\eta}} - 0 \Rightarrow \sqrt{H} = 2\sqrt{\frac{H}{\eta}} \Rightarrow \eta = 4$$

2. Pressure at the bottom of tank $P = h\rho g = 3 \times 10^5 \frac{N}{m^2}$.

Pressure due to liquid column $P_l = 3 \times 10^5 - 1 \times 10^5 = 2 \times 10^5$ and velocity of water $v = \sqrt{2gh}$

$$\therefore v = \sqrt{\frac{2P_l}{\rho}} = \sqrt{\frac{2 \times 2 \times 10^5}{10^3}} = \sqrt{400} \text{ m/s}$$

3. Effective value of acceleration due to gravity becomes $(g + a_0)$.

4. $x = \sqrt{2gh_1} \times \sqrt{\frac{2h_2}{g}}$ or $x = 2\sqrt{h_1h_2}$

Now, imagine a hole at a depth h_2 below the free surface of the liquid. The height of this hole will be h_1 . Clearly, x remains the same.

5. $v = \sqrt{2gh}$

But $p = h\rho g$ or $\frac{p}{\rho} = gh$

$$\therefore v \sqrt{\frac{2p}{\rho}} = \sqrt{\frac{2 \times 2 \times 10^5}{10^3}} \text{ ms}^{-1} = 20 \text{ ms}^{-1}$$

$$R^2v = \text{constant}$$

6. From Torricelli's theorem

$$v = \sqrt{2gd} \quad (i)$$

where v is horizontal velocity and d is the depth of water in barrel.

Time t to hit the ground is given by

$$h = \frac{1}{2}gt^2 \quad \text{or} \quad t = \sqrt{\frac{2h}{g}}$$

$$\therefore R = vt = \sqrt{(2gd)} \sqrt{\frac{2h}{g}} = 2\sqrt{dh} \quad (\text{Using (i)})$$

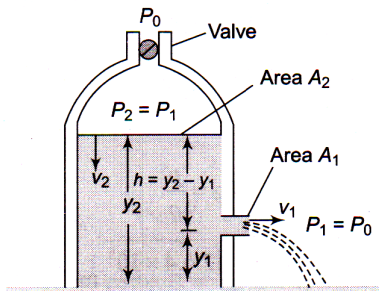
$$\therefore R^2 = 4dh \quad \text{or} \quad d = \frac{R^2}{4h}$$

7. $4(H - 4) = 6(H - 6)$

or $2H = 36 - 16 - 20$ or $H = 10$ cm

8. From equation of continuity, $v_2 = \frac{A_1}{A_2} v_1$

Since $A_1 \ll A_2$, v_2 must be very small compared to velocity of efflux at the hole, therefore we can take $v_2 = 0$.



Fluid emerging from the hole is open to atmospheric pressure P_0 . We take two points A and B at the top of the fluid and at the hole respectively. From Bernoulli's principle,

$$P_0 + \frac{1}{2}\rho v_1^2 + \rho g y_1 = P_1 + \rho g y_2$$

Solving for v_1 , we obtain $v_1 = \sqrt{\frac{2(p_1 - p_0)}{\rho} + 2gh}$

9. Velocity of water coming out from hole A

$$= v_1 = \sqrt{2gh}$$

Velocity of water coming out from hole B

$$= v_2 = \sqrt{2g(H-h)}$$

Time taken by water to reach the ground from hole A

$$= t_1 = \sqrt{2(H-h)/g}$$

Time taken by water to reach the ground from hole B

$$= t_2 = \sqrt{2h/g}$$

Obviously, range on the ground for both is the same

$$\therefore R = v_1 t_1 = v_2 t_2 = 2g\sqrt{h(H-h)}$$

10. Let A and a be the cross-sectional areas of the vessel and hole respectively. Let h be the height of water in the vessel at time. Let $\left(-\frac{dh}{dt}\right)$ represent the rate of fall of level.

$$\text{Then, } A\left(-\frac{dh}{dt}\right) = \alpha v = a\sqrt{2gh}$$

$$\text{or } -\frac{dh}{\sqrt{h}} = \frac{\alpha\sqrt{2g}}{A} dt$$

$$-\int_A^0 \frac{1}{\sqrt{h}} dh = \frac{a\sqrt{2g}}{A} \int_0^g dt$$

$$-(-2\sqrt{h}) = \frac{\alpha\sqrt{2g}}{A} t$$

$$\text{or } t = \frac{A}{\alpha} \frac{1}{\sqrt{2g}} \times 2\sqrt{h} \text{ or } t = \frac{A}{\alpha} \sqrt{\frac{2h}{g}}$$

Now, $t \propto \sqrt{h}$

When h is quadrupled, t is doubled.

11. Velocity of ball when it reaches to surface of liquid

$$a = \frac{1000gV - 500gV}{500V}; \text{ where } V \text{ is}$$

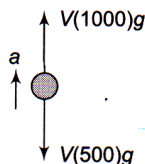
the volume of the ball.

$$a = 10 \text{ m/sec}^2$$

$$\text{Apply } v = u + at \Rightarrow 0 = \sqrt{2gh} - 10t$$

$$\Rightarrow \sqrt{2gh} = 10 \times (2)$$

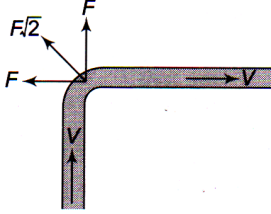
$$\Rightarrow 2 \times 10 \times h = 400 \Rightarrow h = 20 \text{ m}$$



12. Force exerted in vertical direction and horizontal direction are

$$F_1 = F_2 = v_{\text{rel}} \times \frac{dm}{dt} = V \rho \cdot L$$

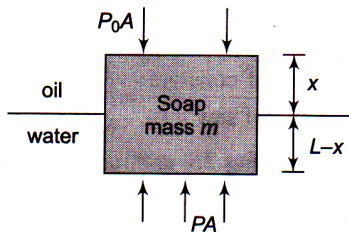
$$\Rightarrow F_{\text{net}} = \rho V L \sqrt{2}$$



13. The velocity of system will not change in horizontal direction as water is leaking out vertically down. Because leaking water does not exchange any momentum with trolley in horizontal direction.

14. Tension in spring $T = \text{upthrust} - \text{weight of sphere}$
 $= V\sigma g - V\rho g = V\eta\rho g - V\rho g$ (As $\sigma = \eta\rho$)
 $= (\eta - 1)V\rho g = (\eta - 1)mg$

15. Let A be area of soap bar.



$$PA - P_0A = mg \Rightarrow (P - P_0)A = mg$$

$$\Rightarrow [300gx + 1000g(L - x)]A = AL \cdot 800g$$

$$\Rightarrow \frac{x}{L} = \frac{2}{7}$$

16. Let specific gravities of concrete and saw dust are ρ_1 and ρ_2 respectively.

According to principle of floatation weight of whole sphere = upthrust on the sphere

$$\frac{4}{3}\pi(R^3 - r^3)\rho_1 g + \frac{4}{3}\pi r^3 \rho_2 g = \frac{4}{3}\pi R^3 \times 1 \times g$$

$$\Rightarrow R^3 \rho_1 - r^3 \rho_1 + r^3 \rho_2 = R^3$$

$$\Rightarrow R^3(\rho_1 - 1) = r^3(\rho_1 - \rho_2) \Rightarrow \frac{R^3}{r^3} = \frac{\rho_1 - \rho_2}{\rho_1 - 1}$$

$$\Rightarrow \frac{R^3 - r^3}{r^3} = \frac{\rho_1 - \rho_2 - \rho_1 + 1}{\rho_1 - 1}$$

$$\Rightarrow \frac{(R^3 - r^3)\rho_1}{r^3 \rho_2} = \left(\frac{1 - \rho_2}{\rho_1 - 1}\right) \frac{\rho_1}{\rho_2}$$

$$\Rightarrow \frac{\text{Mass of concrete}}{\text{Mass of saw dust}} = \left(\frac{1 - 0.3}{2.4 - 1}\right) \times \frac{2.4}{0.3} = 4$$

17. Mass of liquid in horizontal portion of U-tube = $A dp$

Pseudo force on this mass = $Adpa$

Force due to pressure difference in the two limbs

$$= (h_1 \rho g - h_2 \rho g)A$$

Equating, $(h_1 - h_2)\rho g A = Adpa$

$$\text{or } h_1 - h_2 = \frac{Adpa}{\rho g A} = \frac{ad}{g}$$

18. Let m gwt be the weight of object in vacuum.

$$\text{Volume of object} = \frac{m}{3.4}$$

$$\text{Weight of air displaced by object} = \frac{m}{3.4} \times 0.0012$$

$$\text{Volume of brass weight} = \frac{m}{8}$$

Weight of air displaced by brass weights

$$= \frac{m}{8} \times 0.0012$$

Error = difference in buoyancy

$$= 0.0012 \left[\frac{1}{3.4} - \frac{1}{8} \right]$$

$$\text{Fractional error} = \frac{0.0012 \times 4.6}{3.4 \times 8} = 2 \times 10^{-4}$$

19. Suppose volume and density of the body be V and ρ respectively, The, according to law of floatation in water.

Weight = upthrust

$$V\rho g = \frac{2}{3}V\rho_w g \quad (1)$$

In liquid, $V\rho g = \frac{1}{4}V\rho_L g \quad (2)$

From (1) and (2), $\frac{2}{3}V\rho_w g = \frac{1}{4}V\rho_L g$

or $\frac{\rho_L}{\rho_w} = \frac{2/3}{1/4} = \frac{8}{3}$

or $\rho_L = \frac{8}{3}\rho_w = \frac{8}{3} \times 1 \text{ g/cc}$

20. Velocity u of the body when it enters the liquid is

given by $mgh = \frac{1}{2}mu^2$ or $u = \sqrt{2gh}$

Let Volume of the body = V

Mass of the body = Vd

Weight of the body = Vdg

Mass of liquid displaced = VD

Weight of liquid displaced = VDg

Net upward force = $VDg - Vdg$

$$= Vg(D - d)$$

Retardation = $\frac{\text{net weight}}{\text{mass}}$

$$= \frac{V(D - d)g}{Vd} = \left(\frac{D - d}{d}\right)g$$

Acceleration $a = -\left(\frac{D - d}{d}\right)g$

Final velocity, v in the liquid when the body is instantaneously at rest is zero. Let the time taken be t .

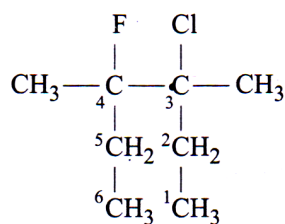
$$v = u + at$$

$$0 = \sqrt{2gh} - \left(\frac{D - d}{d}\right)gt \cdot \left(\frac{D - d}{d}\right)gt = \sqrt{2gh}$$

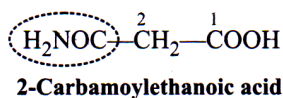
$$\therefore t = \left[\frac{d}{D - d}\right] \sqrt{\frac{2h}{g}}$$

CHEMISTRY

21.



22.



23.

24.

25.

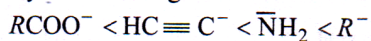
3Cl-atoms (E.W.G.) decrease the -ve charge to a very high extent than benzene ring.
 CH_3 increases electron density on $\bar{\text{C}}$ part.

26.

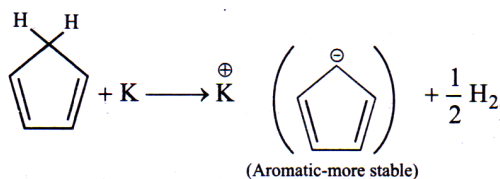
Acid strength is as follows



Hence, the basicity in increasing order should be reverse for conjugated bases.



27.



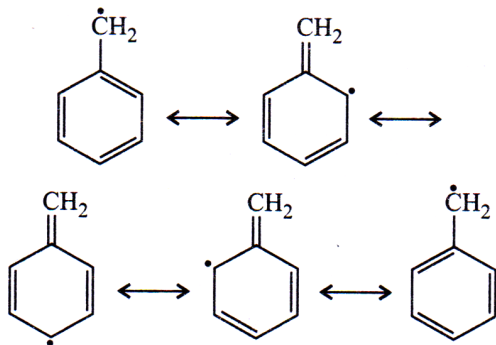
28.

29.

30.

31.

$\text{Ph}\dot{\text{C}}\text{H}_2$ is the most stable among the given free radicals because of very high delocalisation of lone pair of electrons on *o/p*-positions of benzene ring.



32.

— CH_3 group activates benzene ring while — Cl and — NO_2 deactivate.



33.

$-\overset{+}{\text{N}}\text{H}_3$ has electron attracting $-I$ effect.

34.

$(\text{CH}_3)_3\overset{\oplus}{\text{C}}$ is slightly more stable than $\text{C}_6\text{H}_5\overset{\oplus}{\text{C}}\text{H}_2$.

35.

$$\begin{array}{c} \text{CH}_3 \\ | \\ \text{CH}_3 - \text{C}^+ \\ | \\ \text{CH}_3 \end{array}$$
 has 9 α -H atoms relative to C^+ while $^+\text{CH}_3$ has no α -H atom.

36.

37.

38.

The choice **(b)** is non-aromatic while others are aromatic.

39.

Cl has $-I$ effect more than OR where R group opposes the deactivation property of O-atom and electron pairs from O-atom easily shifts towards benzene.

40.

Cl has $-I$ effect and increases acidic character. Moreover, closer is its position to COOH group, stronger is the acid.

